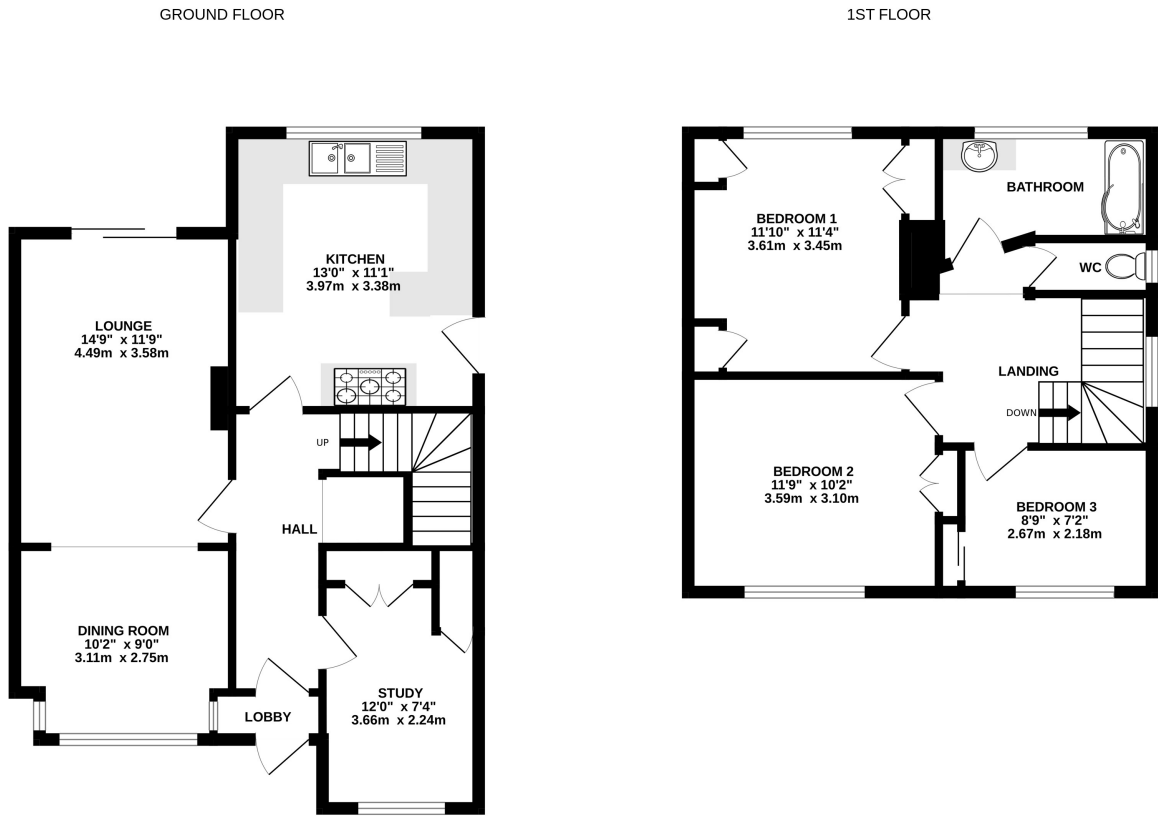


# 21 Winston Close Frimley Green, GU16 6HJ



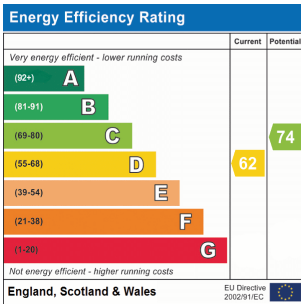
Whilst every attempt has been made to ensure the accuracy of the floorplan contained here, measurements of doors, windows, rooms and any other items are approximate and no responsibility is taken for any error, omission or mis-statement. This plan is for illustrative purposes only and should be used as such by any prospective purchaser. The services, systems and appliances shown have not been tested and no guarantee as to their operability or efficiency can be given.  
 Made with Metropix ©2025



£475,000 Freehold



- Three bedroom detached house
- Comprehensively fitted kitchen with built-in appliances
- Gas fired central heating by radiators
- Study
- Built in wardrobes
- Sealed unit double glazed windows
- Double width drive
- No onward chain



These particulars have been produced in good faith and are believed to be materially correct and fair though their accuracy is not guaranteed and not intended to form part of any contract. None of the appliances or devices have been tested by Luff & Wilkin Property Specialists Ltd and no warranty is given or implied as to their working order.



Registered Office: 13 Claremont Avenue, Camberley, GU15 2DR  
 Registered No. 8078018 England and Wales

Luffandwilkin.co.uk  
 info@luffandwilkin.co.uk  
 Tel 01252 838 899  
 1 Guildford Road, Frimley Green, Surrey, GU16 6NL





## The Property

A three bedroom detached house situated in this desirable part of Frimley Green. The property has been well maintained to include a comprehensively fitted and extended kitchen and a garage conversion. The property has gas central heating by radiators, sealed unit double glazing and there is no onward chain.

The accommodation on the ground floor comprises of a lounge with open plan dining room, kitchen with built in hob with double oven, fridge/freezer, washing machine, and a study (original garage). On the first floor there are three bedrooms all with built in wardrobes, bedroom 1 having further fitted wardrobes, and a modern bathroom suite and separate WC.

Outside there are front and rear gardens and a double width brick paviour drive.

EPC Rating: D Council tax band D: £2,447.16 p.a. (2025/26)

## Location

The property is pleasantly situated in a desirable part of Frimley Green within walking distance of the village shops and schools, doctors' surgery, dentist and recreation ground. Frimley Lodge Park is also nearby with open spaces, picnic areas, a pitch and putt course, children's playground, café and scenic walks along the Basingstoke Canal.

Railway stations are located at nearby Ash Vale, Farnborough Main and Frimley, and access to the M3 motorway can be found at Junction 4 in Frimley.